



Ditech's Element Management Solution

## NetConsul™ EMS

Ditech Networks' NetConsul™ EMS allows service providers to monitor and provision Ditech's Voice Enhancement Devices and Echo Cancellers across an entire network from a single point. NetConsul is an open-standards-based EMS, supporting SNMP for fault management and providing easy integration capabilities with existing network management solutions. A cross-platform Java application, NetConsul provides an intuitive graphical interface with views of device status, provisioning, voice processing settings, and alarms.

### Unified Element Management

NetConsul polls Ditech elements for status and alarms and can update device settings, providing the network operator with a single point of control for all management functions. NetConsul's client/server architecture provides the capability to distribute monitoring and management responsibility to a wide range of users, with minimal impact on client hardware resources or LAN/WAN bandwidth.

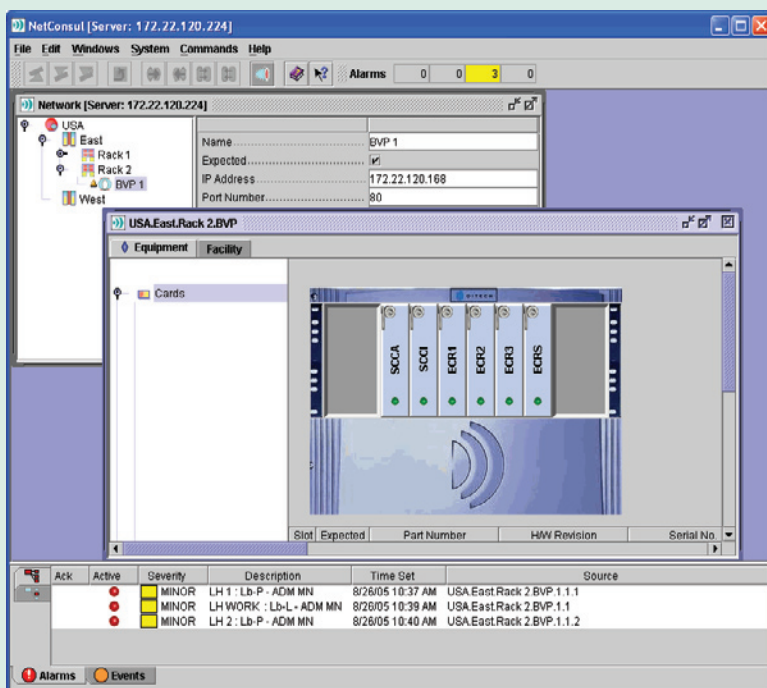
### Easy Installation and Provisioning

Based on Java™ technology, NetConsul does not require dedicated server hardware, and it can be easily installed on a PC or UNIX workstation.

Device provisioning settings can be saved in templates for future application to other elements. The settings of elements and templates are applied to other elements through simple copy-and-paste and drag-and-drop operations.

## PRODUCT FEATURES

- Management of all device features
- Network-level alarm status by site
- Graphical alarm views
- Device templates for easy provisioning
- Drag-and-drop configuration
- Autonomous alarm monitoring via SNMP
- Security features including role-based permission hierarchy
- Context-sensitive online help



Example NetConsul Network View Screen

**Supported Ditech Elements**

**Broadband Voice Processors**

BVP Flex  
BVP TriMux

**Quad Voice Processors**

QVP E1  
QVP T1

**Quad 2 Echo Cancellers**

Quad 2 E1  
Quad 2 T1

**System Requirements**

**NetConsul EMS Client**

Windows® PC or UNIX workstation  
Java 2 Runtime Environment 1.4.2 (included with NetConsul EMS)  
256 MB RAM minimum  
TCP/IP connection

**NetConsul EMS Server**

Windows PC or UNIX workstation  
Java 2 Runtime Environment 1.4.2 (included with NetConsul EMS)  
20 Gigabytes disk space minimum  
TCP/IP connection

**Recommended Server Configurations**

**For up to 12 BVP or 120 QVP/Quad 2 systems**

Windows XP® Professional/Windows Server™ 2003 with 1.5 GHz processor and 512 MB RAM  
Sun Microsystems™ Sun Fire™ V100 server with 512 MB RAM

**For up to 60 BVP or 600 QVP/Quad 2 systems**

Windows XP Professional/Windows Server 2003 with 2.5 GHz processor and 1 GB RAM  
Sun Microsystems Sun Fire V100 server with 1 GB RAM

**For up to 150 BVP or 1500 QVP/Quad 2 systems**

Windows XP Professional/Windows Server 2003 with 3.2 GHz dual processor and 2 GB RAM  
Sun Microsystems Sun Fire V210 server (1.34 GHz dual processor) with 2 GB RAM

**Remote Software Upgrades**

Updates to device software files are easily selected in NetConsul for uploading to target network elements. The software is uploaded to the device's inactive plane, allowing the network manager to later activate the new software using a single command that keeps the original software available as backup.

**Security**

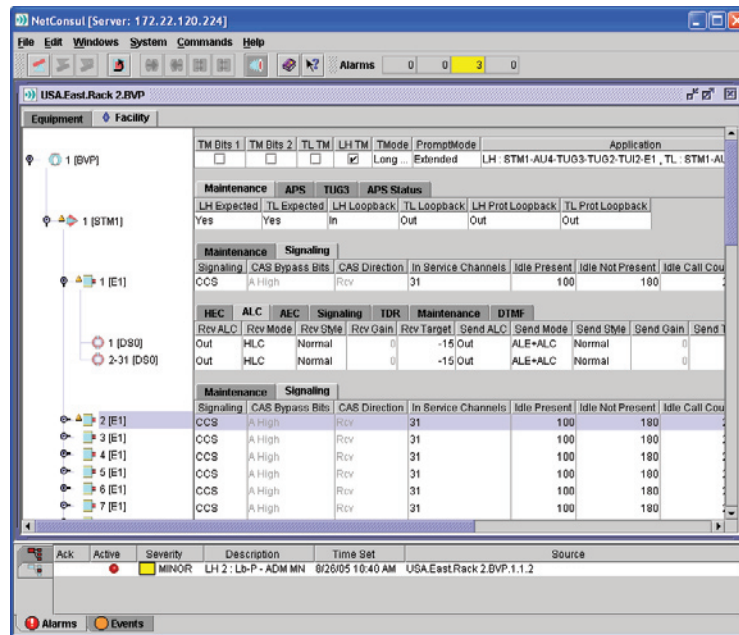
Network security is a key concern for carriers today. NetConsul provides a variety of features that protect against unauthorized access to remote network elements. NetConsul supports password-protected login, with optional validation using RADIUS authentication. One of four privilege levels can be assigned to each user, either locally or via RADIUS authentication, to ensure that only appropriate access and control are enabled for each user.

**Network Alarm Monitoring**

NetConsul continuously monitors Ditech elements for alarms, and SNMP traps can be sent to Telco Network Management Systems. When status changes occur, NetConsul displays the device and system alarms, identifying the alarm type, severity, source, and path. Displays can be filtered by the user, and alarm reporting is configurable at the system level. New alarms are flagged in the element tree and toolbar for easy identification.

**Context-Sensitive Help**

With one click on a device, provisioning parameter, or display, the Help system brings up detailed information, including parameter references and device descriptions. To make tasks easier in dialog boxes and windows, a Help button accesses explanations and how-to examples. Help pages are linked among related topics for easy navigation without returning to a topics list, and a Quick Links list and Index are easily accessible.



Example NetConsul Device Provisioning Screen



**Ditech Networks**  
825 East Middlefield Road  
Mountain View, CA 94043  
USA

800 234 0884 toll free  
800 770 0117 support  
650 623 1300 direct  
650 564 9599 fax

[ditech@ditechnetworks.com](mailto:ditech@ditechnetworks.com)  
[www.ditechnetworks.com](http://www.ditechnetworks.com)